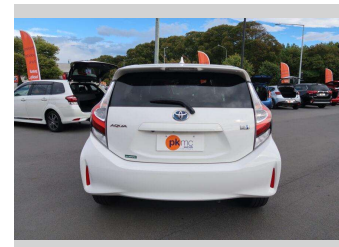
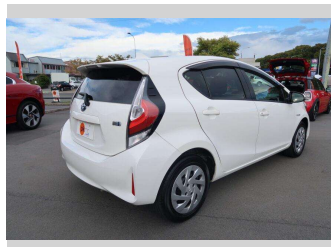
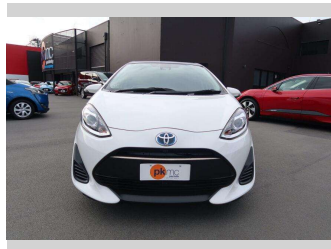


# 2018 Toyota Aqua G HYBRID




**Purchase Price** **\$17,990**

Includes GST  
Excludes on-road costs of \$550

Finance may be available on this vehicle. Ask one of our friendly staff for more information.

Gain peace of mind with Mechanical Breakdown Insurance. **Ask us how.**

- Top features**
- » Air Conditioning
  - » Anti Lock Braking Syst...
  - » Auto Lights
  - » Bluetooth
  - » CD Player
  - » Central Locking
  - » Central Locking
  - » Child seat anchor poin...
  - » Climate Control
  - » Cruise Control
  - » Digital Display
  - » Electric Mirrors (Retr...
  - » Face Lift Model
  - » Power Steer
  - » Power Windows
  - » Radio
  - » Rear Wiper
  - » Remote Lock

<b>Body Style</b>	<b>5 door, Hatchback</b>	<b>Reg No.</b>	-
<b>Odometer</b>	<b>80,000 km</b>	<b>Ext Colour</b>	<b>White</b>
<b>Engine</b>	<b>1500 cc</b>	<b>History</b>	-
<b>Fuel Type</b>	<b>Hybrid</b>	<b>Seats</b>	<b>5 seats</b>
<b>Transmission</b>	<b>Automatic</b>	<b>CO2 Emissions</b>	★★★★☆
<b>Wheels</b>	-	<b>90 grams/km</b>	
<b>VIN</b>	<b>7AT0H65YX24746221</b>	<b>Energy Economy</b>	★★★★☆
<b>Interior</b>	-	<b>Annual fuel cost of \$1,490</b>	
<b>Safety</b>		<b>3.8L per 100km</b>	
	Based on 2023 UCSR rating for 12-20 models		Cost per year is an estimate based on petrol price of \$2.80 per litre and an average distance of 14000 km. Emissions and Energy Economy figures standardised to 3P WLTP.
		<b>Stock ID: 4391</b>	



Paul Kelly Motor Company | Phone 03 377 8500 | Email 30@paulkelly.co.nz  
30 Moorhouse Avenue, Addington, Christchurch 8011  
www.paulkelly.co.nz